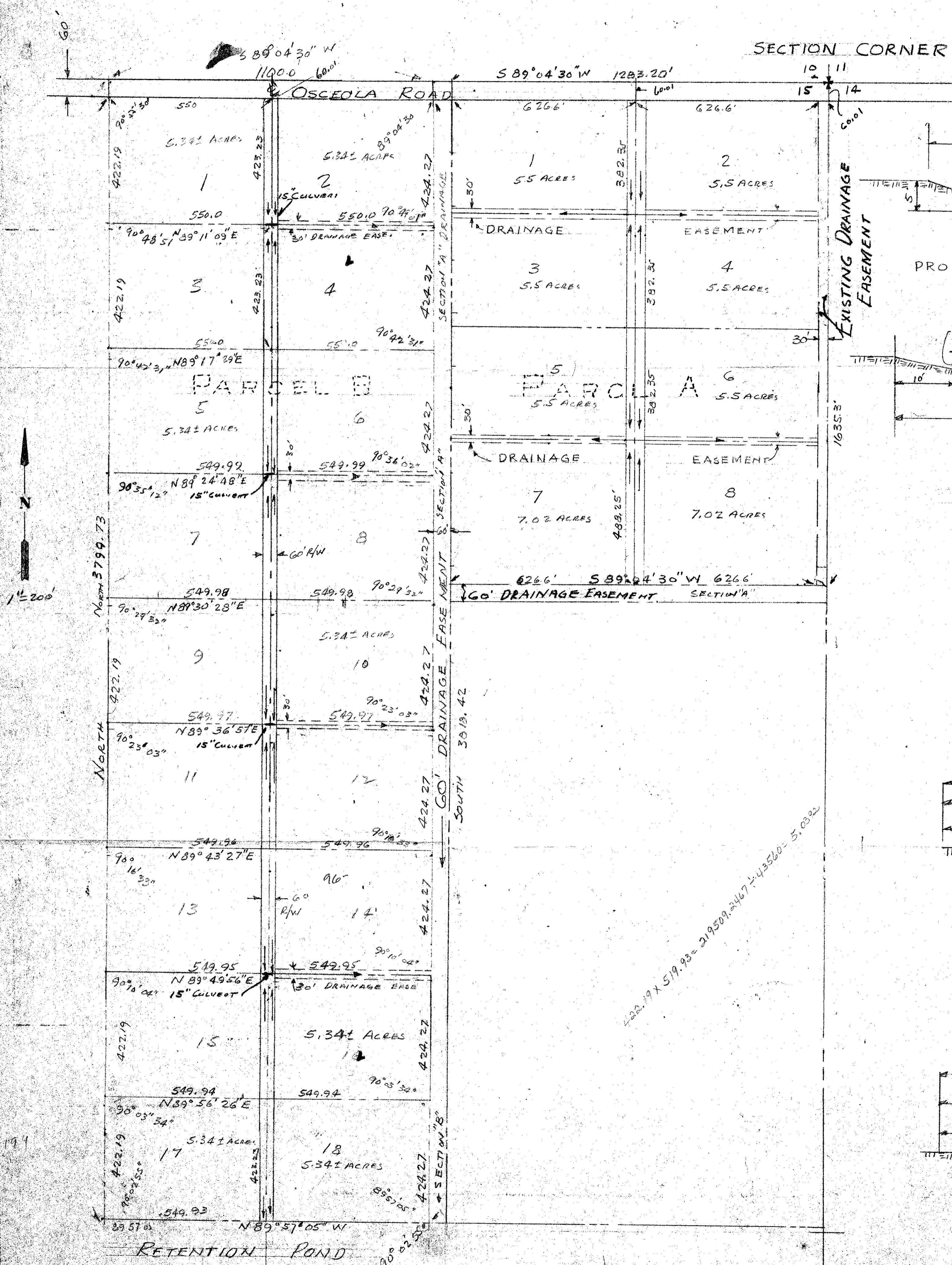
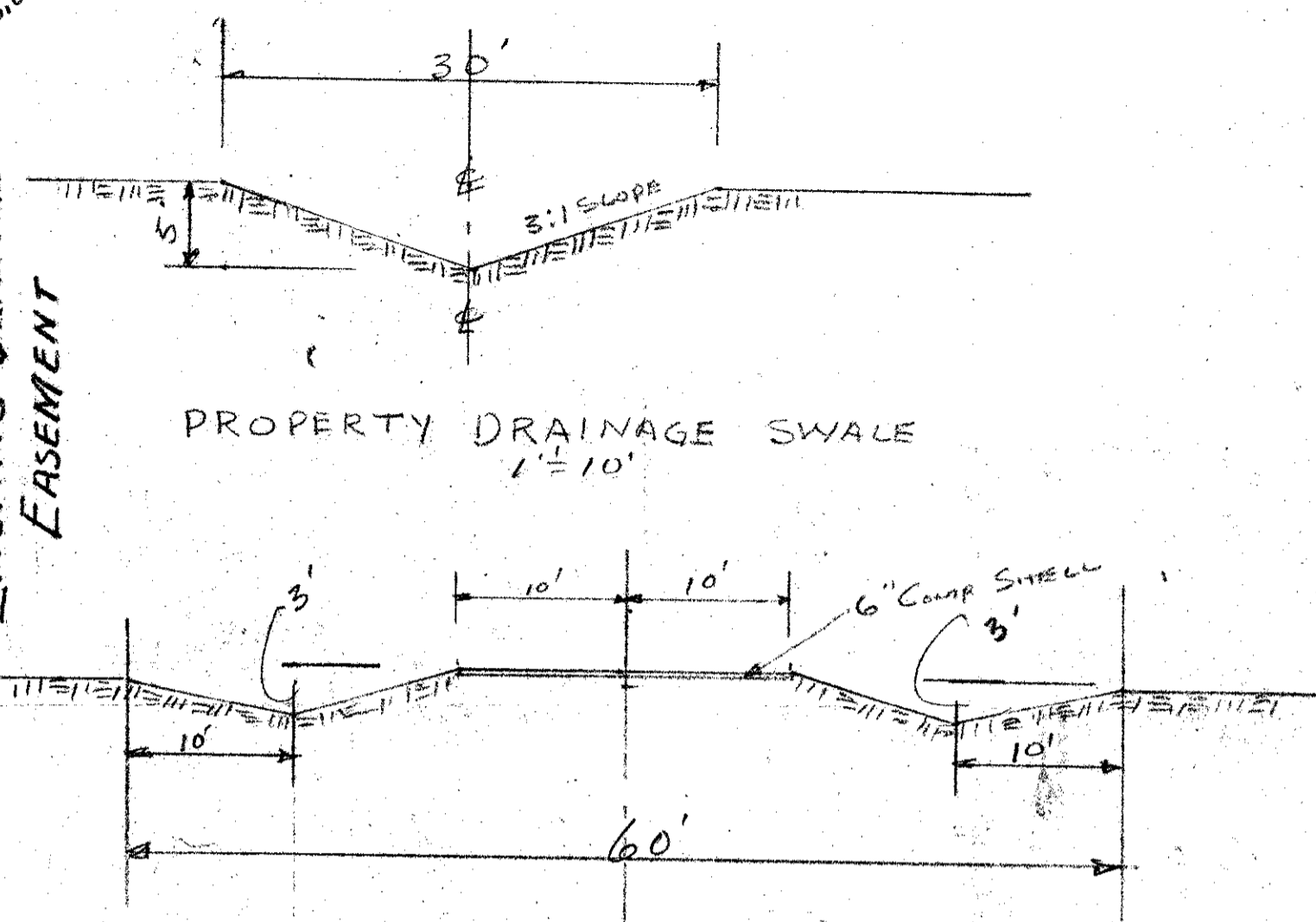


EXHIBIT "A"



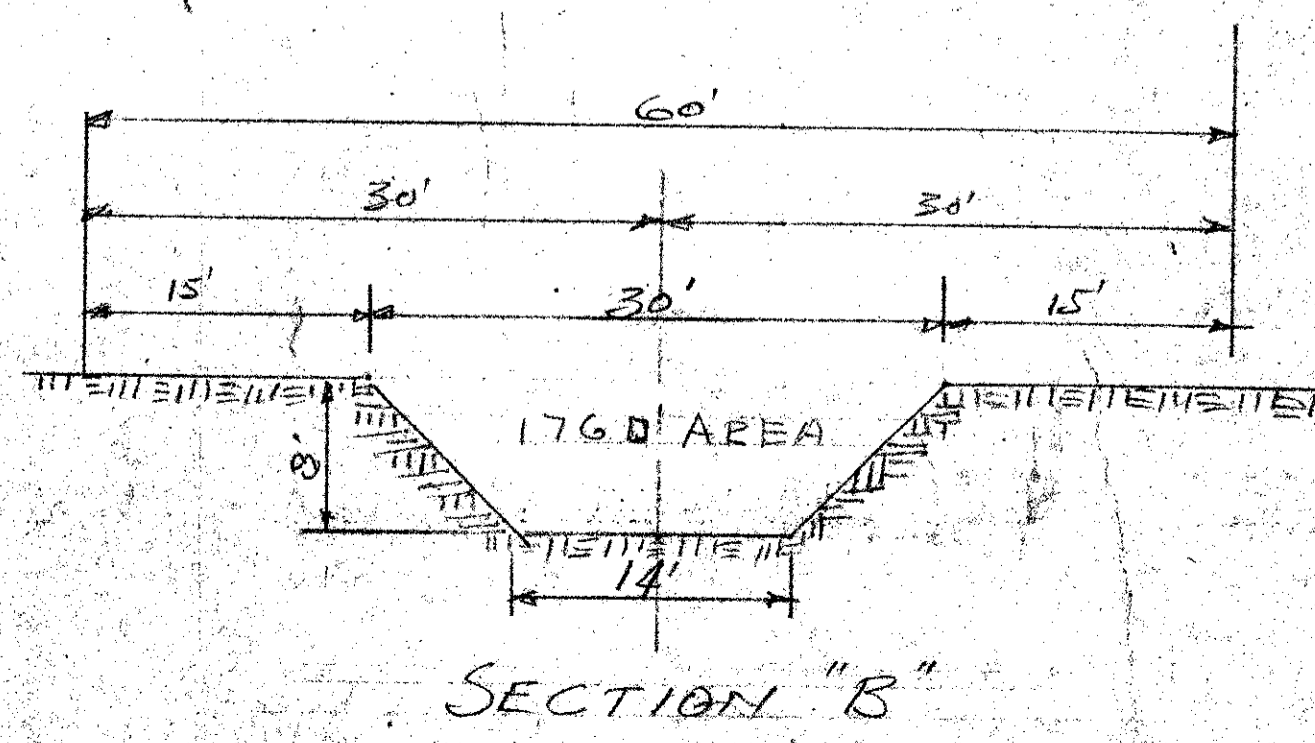
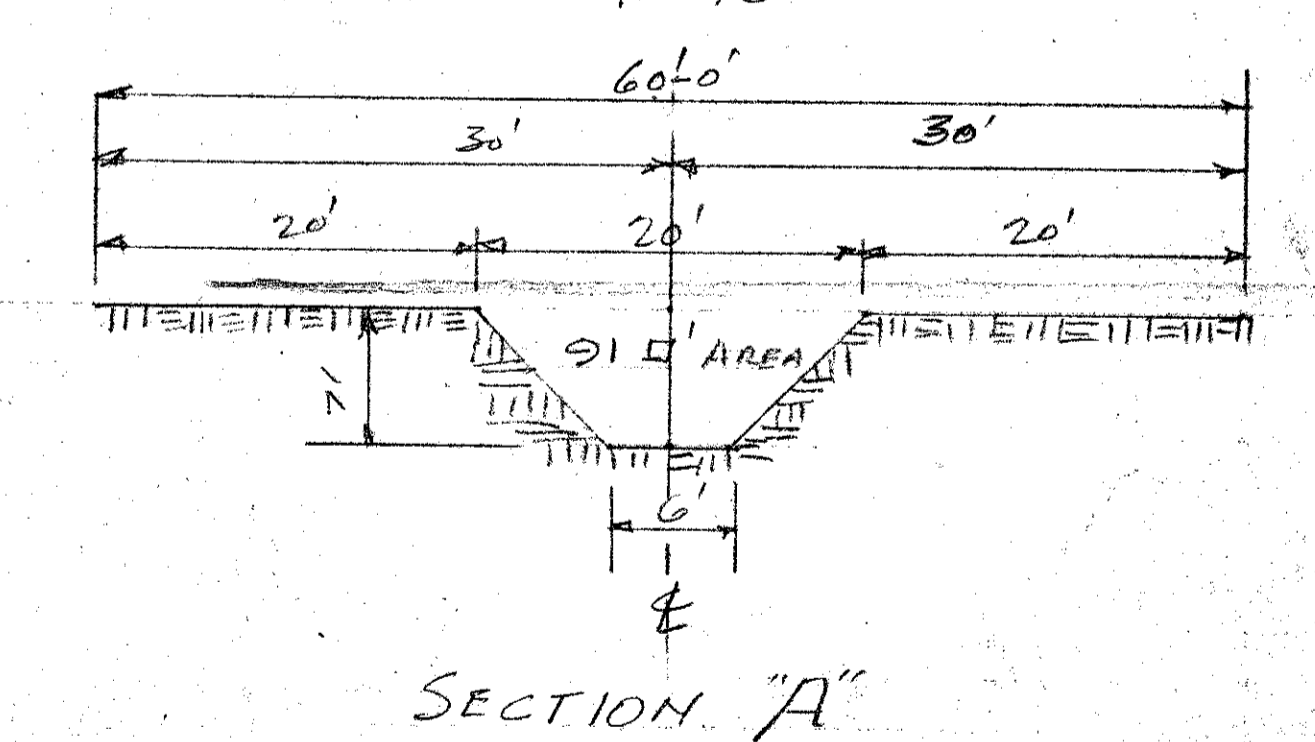
SECTION CORNER

EXISTING DRAINAGE EASEMENT



TYPICAL ROAD SECTION 1"=10'

DRAINAGE SECTIONS 1"=10'



LEGAL DESCRIPTION - PARCEL A
 Commencing at the Northeast corner of Section 15, Township 43 South, Range 40 East, Palm Beach County Florida, run south along the east line of said section 60.01 feet to the point of beginning. From the point of beginning continue south along the east line of said section 1635.3 feet to a point; thence run westerly S 89 04' 30" W parallel to the north line of said section 15, 1283.2 feet to a point; thence run north parallel to the east line 1635.30 feet to a point, thence run N 89 04' 30" E parallel to and 60 feet south of the north line of said Section 15, 1283.2 feet to the point of beginning. This tract contains 48.166 acres. **LESS EAST 30' FOR DRAINAGE**
 - 1.126 47.04

LEGAL DESCRIPTION - PARCEL B
 Commencing at the northeast corner of Section 15, Township 43 South, Range 40 East, Palm Beach County, Florida, run S 89 04' 30" W along the north line of said section 1343.21 feet to a point; thence run south parallel to the east line of said section 60.01 feet to the point of beginning. From the point of beginning continue on a bearing of south, 3818.42 feet to a point; thence run N 89 57' 05" W parallel to the south line of said Section 15, 1099.86 feet to a point, thence run north parallel to the east line of said section, 3799.73 feet thence run N 89 04' 30" E parallel to and 60 feet south of the north line of said section, 1100.0 feet to the point of beginning. This tract contains 96.176 acres.

ur0007.igr
 MANDELL REALTY
 SEC 15/43/40 S/D

ROADS & DRAINAGE FOR

DRAWN BY E.H.M.	CHECKED BY	SHEET 1 OF 3	SEC 15, TW 43S, R40E MANDELL REALTY LAKE WORTH, FLORIDA
		DATE 11-12-75	EARL H. MARTIN REGISTERED CIVIL ENGINEER LAKE WORTH, FLORIDA

APPR. 6/15/77 S/D